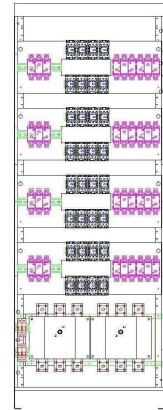




## ALT5R - ALT56

from 350 to 400 kVAr

Automatic power factor correction equipment model ALT Low health, with frame colour RAL 7C folded and galvanized steel base. The system is equipped with disconnecting door switch, microprocessor controller RDM 4 standard (for 350 kVAr power), with 4 outputs, THDI control, temperature control, controlling ventilation, fixed battery option, contact for remote reporting of cumulative alarm signal, RDM 6 standard (400 kVAr power), with 6 outputs, THDI control, temperature control, controlling ventilation, fixed battery option, contact for remote reporting of cumulative alarm signal. Product consisting of modular withdrawable drawers each with contact for capacitors with insertion resistors inrush current limiting with early contact. Battery protector composed of three-phase cylindrical capacitors. Blocking reactors made of oriented Crystal lamination sheets, high linearity and granted to 189 Hz. Indoor floor installation and cables from bottom with large openings



### DATA EQUIPMENT

AGG. 01-01-2014 1.0

Reactive Power		kVAr effective 400V	kVAr 450V	Batteries to 450V	kVAr effective 400V	kVAr 450V	Batteries to 450V
		298	350	50-100-100-100	340	400	50-50-50-50-100-100
Degree of protection	IP	30 ( on request 54)			30 ( on request 54)		
Three-phase power supply, Un	V	400 (other voltage on request)			400 (other voltage on request)		
Rated frequency	Hz	50			50		
Auxiliary circuits voltage	V	400 ( on request 110V 230V)			400 ( on request 110V 230V)		
Ambient temperature limits min-max	°C	-15°C ÷ +35°C			-15°C ÷ +35°C		
Dimensions (HxWxD)	mm	1930 x 685 x 600			1930 x 685 x 600		
Ventilation	—	Forced with fans positioned on the roof			Forced with fans positioned on the roof		
Protection fuse battery	—	Type NH00 category gG			Type NH00 category gG		
Cable entry	—	Bottom			Bottom		

### DATA REGULATOR

#### RDM 4 Standard

#### RDM 6 Standard

	N°	4	6
N° of batteries controller	N°	4	6
Control Batteries	—	Manual / Automatic	Manual / Automatic
Allarm	—	Overvoltage, Overcurrent, Over, Undercompensation, Overtemperature, THDI%	Overvoltage, Overcurrent, Over, Undercompensation, Overtemperature, THDI%
Display	—	LCD 2 lines 16 characters backlight display	LCD 2 lines 16 characters backlight display
Parameters displayed on the display	—	Voltage, Current, Cos φ, Δ kVAr	Voltage, Current, Cos φ, Δ kVAr
Electrical quantities measured	—	Voltage, Current, Cos φ, 2 or 4 quadrant mode	Voltage, Current, Cos φ, 2 or 4 quadrant mode
Power factor adjustment	—	0,85 ind. – 0,95 cap.	0,85 ind. – 0,95 cap.
Range primary current transformer	A	5-10.000	5-10.000
Reactive power capacitor bank	kVAr	0,1 – 6500	0,1 – 6500
Sensitivity adjustment	s	5 – 99	5 – 99
Reconnection time	s	5 -240	5 -240
Range capacitor voltage	V	100 – 1000	100 – 1000
Contact arrangement alarm	—	1 contact NO-NC	1 contact NO-NC
Alarm relay contacts capacity	—	8A - 250 V AC	8A - 250 V AC
Power	VA	5	5

### DATA CHOKES

Frequenza di accordo	Hz	189	189
Grado di induttanza	%	7	7
Classe termica	—	F	F
Protezione sovratemperatura	—	Termistore NC	Termistore NC

### DATA CAPACITORS

#### ALT5R.....

#### ALT56.....

#### ALT5R.....

#### ALT56.....

		ST Three-phase	AT Three-phase	ST Three-phase	AT Three-phase
Type capacitor installed	—	ST Three-phase	AT Three-phase	ST Three-phase	AT Three-phase
Rated voltage capacitor	V	450	440	450	440
Losses dielectric	W/kVAr	≤0,2	≤0,2	≤0,2	≤0,2
Class of temperatur	—	-25D	-40D	-25D	-40D
Inrush corrent	A	200xIn	400xIn	200xIn	400xIn
Overcurrent	A	4 x In	1,5 ÷ 2 x In	4 x In	1,5 ÷ 2 x In
Statistical life expectancy	h	130.000 (-25/C) 110.000 (-25/D)	150.000 (-40/D)	130.000 (-25/C) 110.000 (-25/D)	150.000 (-40/D)
Altitude max	m	≤ 2000 above sea level	≤ 4.000 above sea level	≤ 2000 above sea level	≤ 4.000 above sea level
Dielectric system	—	MKP metallised polypropylene stronger	MKP metallised polypropylene stronger	MKP metallised polypropylene stronger	MKP metallised polypropylene stronger
Impregnation	—	Dry resin	Dry type inert gas AZOTO N2	Dry resin	Dry type inert gas AZOTO N2
Descarge resistor	—	50V - 60 s	50V - 60s	50V - 60 s	50V - 60s
Safety features	—	Overpressure disconnecter	Overpressure disconnecter	Overpressure disconnecter	Overpressure disconnecter
Standard	—	CEI EN 61921, CEI EN 60439-1, CEI EN 60831-		CEI EN 61921, CEI EN 60439-1, CEI EN 60831-1	